

SKYLIFT MARINE

SKYLIFT-3000 – SUBMERSIBLE MULTIPURPOSE JACKUP

Skylift-3000 designed for bringing heavy structures, such as concrete tunnels, windmill foundation ships, etc., from quay into the water and vice versa.

The platform is built out of a mono hull pontoon, 4 Jacking Systems and 4 Connectable Spudlegs.

The 4 jacking systems are manufactured with a heavy duty pinning system. Operation of this fast and heavy duty system, lifting and lowering / locking and un-locking, is done completely hydraulically from a control panel located in the control cabin.

Specification

- Length pontoon : 60.00 meter
- Width pontoon : 28.00 meter
- Height pontoon : 4.00 meter
- Deck load : 12.00 T/m²

Capacity

- Payload : 3.000 T
- Water height above deck submerged : 8.00 meter
- Width between Jackhouses short side : 19.00 meter
- Width between Jackhouses long side : 39.80 meter

Specification Spud Legs

- Length : 52.00 meter (1 x 15.75 mtr + 1 x 36.25 mtr)
- Diameter : 2.00 meter

Specification Jacking System

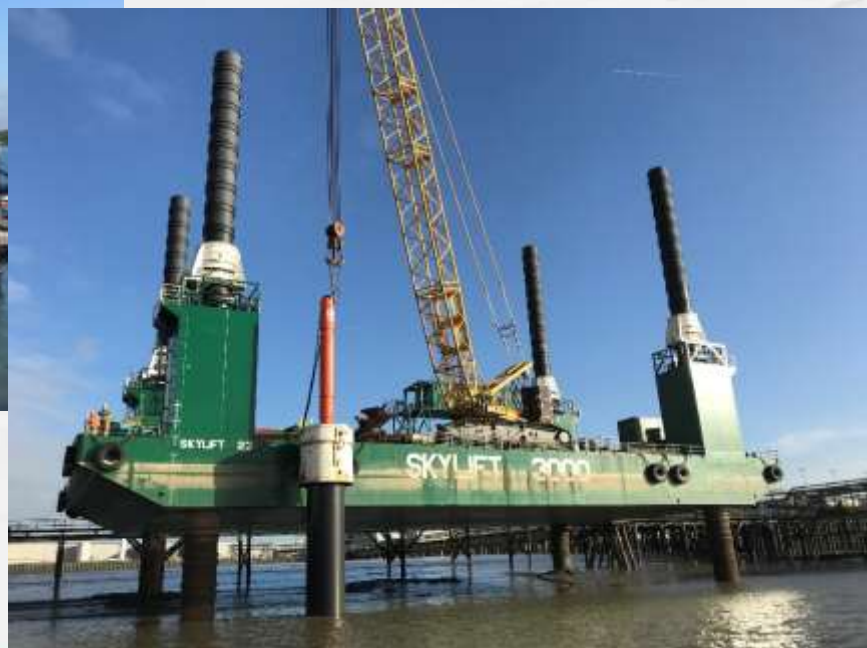
- Type : Hydraulic cylinders
- Locking : By means of hydraulic activated locking blocks
- Jacking Capacity (4x) : 4x 1444T = 5776T
- Jacking speed : Platform up : 7.3m/hr
: Platform down : 8.5m/hr
: Legs down : 20.4m/hr

Controls:

- System : Touch Screen or Joystick
- PLC : PLC operated
- Location : In control cabin

Hydraulic Power Unit

- Type : 4x Electrical-Hydraulic Pump sets
- Capacity HPU : 4x 150 kW



SKYLIFT MARINE

SKYLIFT-3000 –SUBMERSIBLE MULTIPURPOSE JACKUP

Generator

- Type : 2 No Caterpillar diesel generator sets C18 - 700 kVA
- Capacity : 2 x 700 kVA
- Location : In engine rooms inside control cabin

Environmental conditions

Temperature:

- Maximum design air temperature : +40°C
- Minimum design air temperature : -20°C

Water depth:

- Maximum pile length below barge : 36.20M

Wave:

- Max. wave height (operational condition) : 2.00m (crest to trough)
- Max. wave height (survival condition) : 7.00m (crest to trough)
- Wave period (operational) : 3.69 sec. min / 4.74 sec. max
- Wave period (survival) : 6.90 sec. min / 8.87 sec. max
- Wave crest above water line = 2/3wh : 4.67m
- Wave trough below water line = 1/3wh : 2.33m
- Air gap to bottom of pontoon : 1.50m

Wind:

- Operational max. wind velocity : 14 m/s (approx. 6 Beaufort)
- Survival max. wind velocity : 30 m/s (approx. 11 Beaufort)

Current:

- Current velocity : 1.8 m/s

Towing Conditions:

- Unloaded : Unrestricted

Classification:

- Lloyds Register EMEA : LRoS  OU 100AN, Self Elevating Unit; Unmanned Towage, Restricted Service Area 20 NM Offshore,  OMC



Contact :

David Ravestein / Aernout Goedbloed

Skylift Marine B.V.

Waalbandijk 26, 6669 MB Dodewaard (Holland)

Tel +31 (0)488 - 41 18 01

Fax +31 (0)488 - 41 26 47

E-mail sales@ravestein.nl

Website www.rcpbv.com