

# SKYLIFT MARINE

## SKYLIFT-10000 – SUBMERSIBLE MULTIPURPOSE JACKUP

Skylift-10000 designed for launching heavy structures, such as superyachts, submarines, windmill parts etc..., from the quay into the water and vice versa. Also drydocking services can be done with the use of Skyift.

The platform is built out of a mono hull pontoon, 4 Jacking Systems and 4 Connectable Spudlegs.

The 4 jacking systems are manufactured with a heavy duty pinning system. Operation of this fast and heavy duty system, lifting and lowering / locking and un-locking, is done completely hydraulically from a control panel located in the control cabin.

### Specification

- Length pontoon : 100.00 meter
- Width pontoon : 40.00 meter
- Height pontoon : 6.50 meter
- Deck load : 12.00 T/m<sup>2</sup>

### Capacity

- Payload : 10.000 T
- Water height above deck submerged : 15.00 meter
- Width between Jackhouses short side : 26.00 meter
- Width between Jackhouses long side : 65.00 meter

### Specification Spud Legs

- Length : 70.00 meter
- Diameter : 2.50 meter

### Specification Jacking System

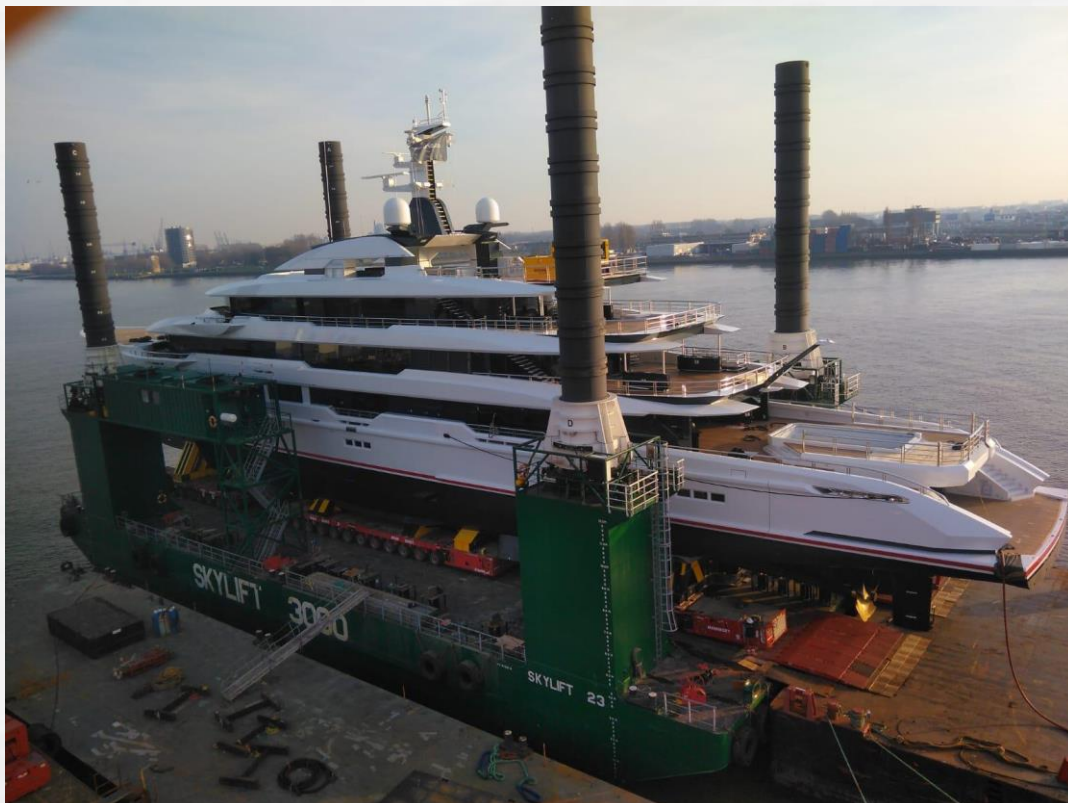
- Type : Hydraulic cylinders
- Locking : By means of hydraulic activated locking blocks
- Jacking Capacity (4x) : 4x 4,000T = 16,000T
- Jacking speed : Platform up : 10.00m/hr  
: Platform down : 10.00m/hr  
: Legs down : 20.00m/hr

### Controls:

- System : Touch Screen or Joystick
- PLC : PLC operated
- Location : In control cabin

### Hydraulic Power Unit

- Type : 4x Electrical-Hydraulic Pump sets
- Capacity HPU : 4x 250 kW



# SKYLIFT MARINE

## Generator

- Capacity : 2 x 1,000 kVA
- Location : In engine rooms inside control cabin

## Environmental conditions

### Temperature:

- Maximum design air temperature : +40°C
- Minimum design air temperature : -20°C

### Water depth:

- Maximum pile length below barge : 40.00m

### Wave:

- Max. wave height (operational condition) : 2.00m (crest to trough)
- Max. wave height (survival condition) : 7.00m (crest to trough)
- Operational Jacking condition : Sea State 3
- Operational Standing condition : Sea State 5
- Operational Survival condition : Sea State 7

### Wind:

- Operational max. wind velocity : 13 m/s (approx. 6 Beaufort)
- Survival max. wind velocity : 30 m/s (approx. 11 Beaufort)

### Current:

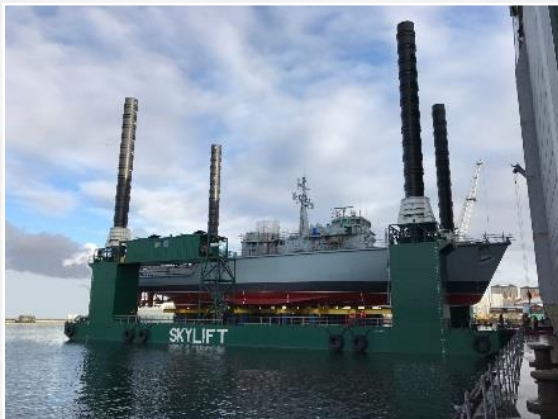
- Current velocity : 1.8 m/s

### Towing Conditions:

- Unloaded : Unrestricted

### Classification:

- Lloyds Register EMEA : LRoS  OU 100 AN, Self Elevating Unit; Unmanned Towing, Restricted Service Area 20 NM Offshore,  OMC



**Contact :**  
**David Ravestein / Aernout Goedbloed**

**Skylift Marine B.V.**  
Waalbandijk 26, 6669 MB Dodewaard (Holland)  
Tel +31 (0)488 - 41 18 01  
Fax +31 (0)488 - 41 26 47  
E-mail sales@ravestein.nl  
Website www.rcpbv.com